



TECHNICAL SPECIFICATIONS

Lifting Capacity: 350 lb (159 kg)

Maximum Mobility Device Wheelbase: 40 in (102 cm)

Maximum Mobility Device Width: 28 in (71 cm)

Vehicle Types: minivans, full-size vans, select SUVs and crossovers

[Learn more at www.bruno.com](http://www.bruno.com)

Transporting a scooter or powerchair doesn't get any easier than with Bruno's Joey. Ride a mobility device onto the platform from either direction, press a button and the Joey lifts and stows your device into the back of your vehicle. Count on the Joey for a safe, simple solution to travel with a scooter or powerchair any time of day or in any weather.

- Fully-powered, one-button operation
- Compact design allows for second row seating in most applications
- Self-leveling platform for slightly uneven surfaces
- Easy drive on/off platform with traction coating
- Industry exclusive safety barrier prevents mobility device from entering passenger area during sudden stops
- Backlit hand-held control and platform illumination for night loading
- No scooter or powerchair modifications
- Manual backup for peace of mind
- Potential to reinstall in another applicable vehicle*
- Potentially eligible for auto manufacturer rebate*
- 3-year limited warranty

* Contact Bruno dealer for details.

JOEY FEATURES



One button control with indicator light.



Industry-exclusive safety barrier.
Protected by US Utility Patent No. 403.615

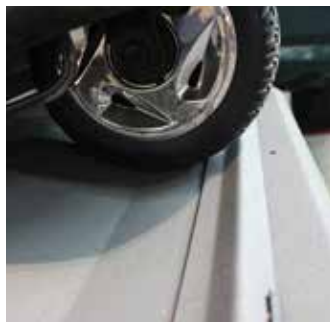


Platform illumination for night loading.

JOEY OPTIONS



Back-Off easily removes back of mobility device to fit into shorter vehicle openings.



Wheel chock kit required for FWD powerchairs.



Belt kit* includes two retractable securement straps for added peace of mind.
**Required in some vehicles*



Bruno Independent Living Aids, Inc.
1780 Executive Drive, Oconomowoc, WI 53066
www.bruno.com

© Bruno Independent Living Aids, Inc. 2019
2019-03-18-Joey.indd • MKT-L-1